



WAREHOUSE AND SHOP EQUIPMENT



IPRIS-PROFIL

Ukraine, Kharkiv, 61106, 12, Plytkova street
tel / fax: +38 (057) 763-66-00, e-mail: info@ipris-profil.com

www.ipris-profil.com

CONTENTS

The main elements of pallet racks / 4	Pallet racks with front loading / 6
Drive-in pallet racks / 8	Mezzanines / 10
Platform / 12	Self-supporting warehouses / 14
Shelf racks / 16	Trading racks CASH & CARRY / 18
Demonstration equipment / 20	Accessories / 22
Expositors / 24	Storage rack for types / 26
Shelving protective elements / 27	Archive shelf racks / 28
Paternosters / 30	Paternoster components / 38
Mobile cutting device / 44	Roll-containers / 46
Trolley / 55	Mesh containers / 64
Packing table / 65	Frames and mobile pallets / 66



ABOUT US

Ipris-Profil LTD was founded in 2003 as a manufacturer of electrowelded tubes and storage equipment. The closed cycle of production allows us to provide high quality products and to achieve stable and timely deliveries.

OUR ADVANTAGES



CLOSED PRODUCTION
CYCLE



INDIVIDUAL
APPROACH



INNOVATIVE
TECHNOLOGIES



MORE THAN 20 YEARS
OF EXPERIENCE



QUALITY CONTROL
SYSTEM



PRODUCTION IN
SHORT TERMS



The key factor of success is our own full production line, with a set of modern and automatic equipment.

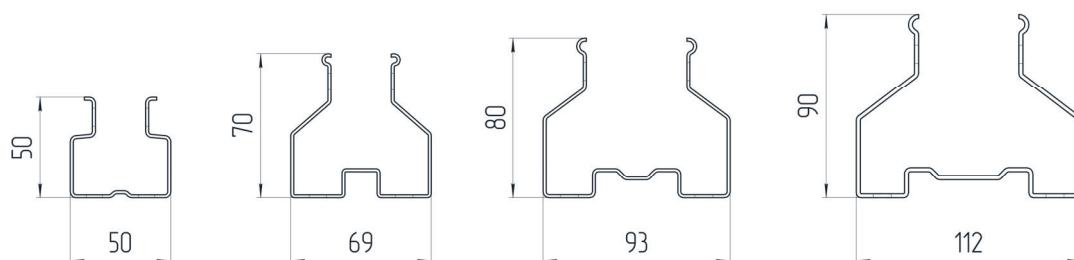
OUR PRODUCTION EQUIPMENT

- ◆ 2 automatic powder-paint lines
- ◆ Cold galvanizing workshop
- ◆ 2 Steel Pipe Production Lines
- ◆ 3D bending machine
- ◆ more than 400 highly skilled employees
- ◆ CNC milling machines
- ◆ CNC laser cutting machines
- ◆ Own tool workshop

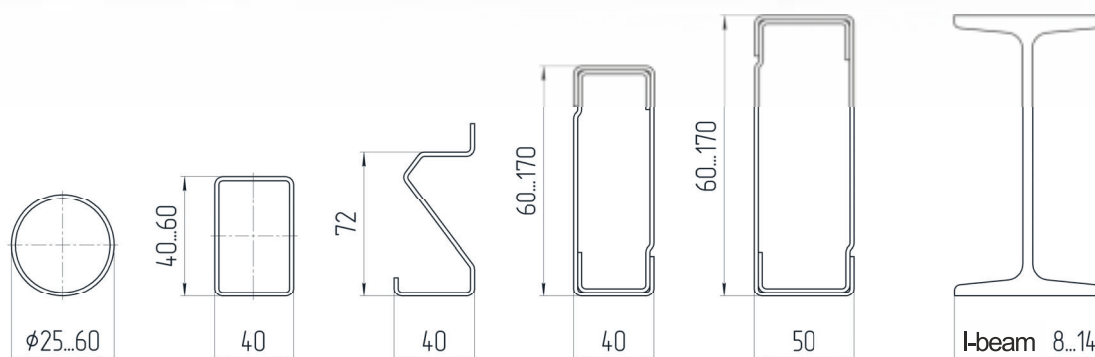
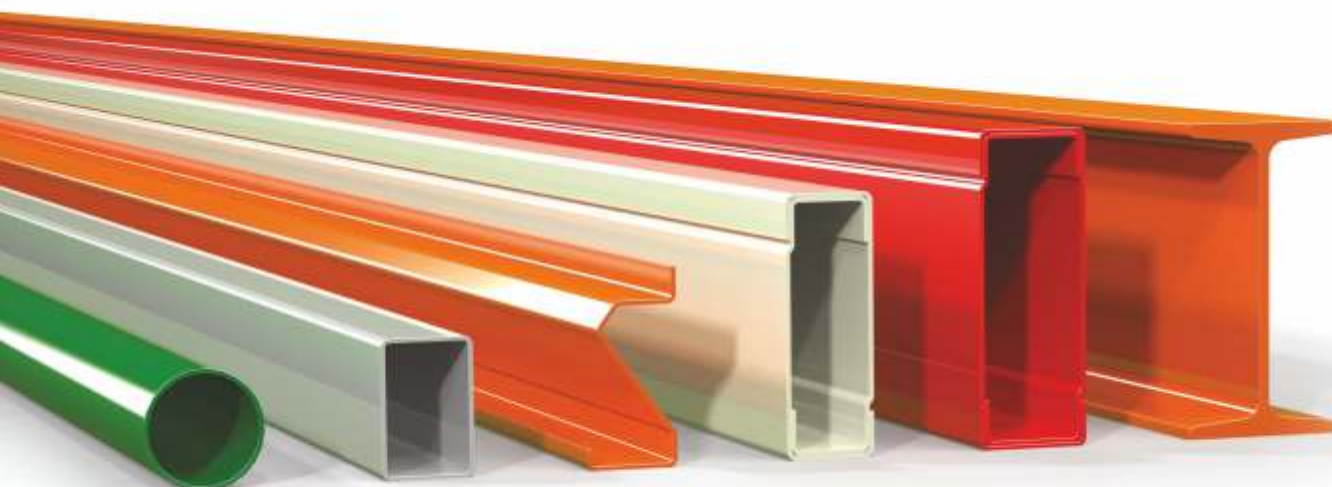
We are ready to manufacture metal solutions for product transportation considering your business needs. We develop, plan and execute customized and cost-effective solutions that serve the interest of your business.

THE MAIN ELEMENTS OF PALLET RACKS

- ◆ Pallet racks are made of vertical frames and horizontal crosspieces. The frame is a structure of two uprights connected with the help of bracings. Depending on the weight and dimensions of goods, racks of various widths are applied - SR-70, SR-90, SR-110. The rack type determines the bearing capacity of the frame.
- ◆ High rack strength at low weight is achieved by using an open perforated profile of complex shape with a large number of strengthening ribs.
- ◆ Mounting holes in the frontal part of the racks are arranged with a pitch of 50 mm and are used for fastening horizontal traverses at hitches. This prefabricated structure allows for a quick alteration of distance between tiers.



- ◆ A traverse is a horizontal beam with hitches, which is hang on mounting holes in the rack. Each rack tier is formed with the help of two traverses. Depending on the length of the traverse, one can place two to four EUR or FIN pallets.
- ◆ Six types of traverses of different shape, weight, carrying capacity and intended use have been developed.
- ◆ Traverses of two C-shaped profiles, nested one in another, are often used for storage on pallets. The bearing capacity of such a traverse depends on the profile height. Wide range of sizes allows selection of the best option based on the traverse load capacity.
- ◆ To improve the functionality of racks manufactured, we have developed piped, I-shaped and Z- profile-based traverse. The type of traverse is selected considering the racking system operation conditions, planned loads and physical parameters of the cargo.



PALLET RACKS WITH FRONT LOADING

Front type pallet racks provide quick access to each unit of the goods at any time, allow to store a wide range of products. The racks design can be easily changed by adding / removing elements. Flexibility and lower cost compared to other types of shelving is a good reason for this type of shelving being the most common type of storage equipment.



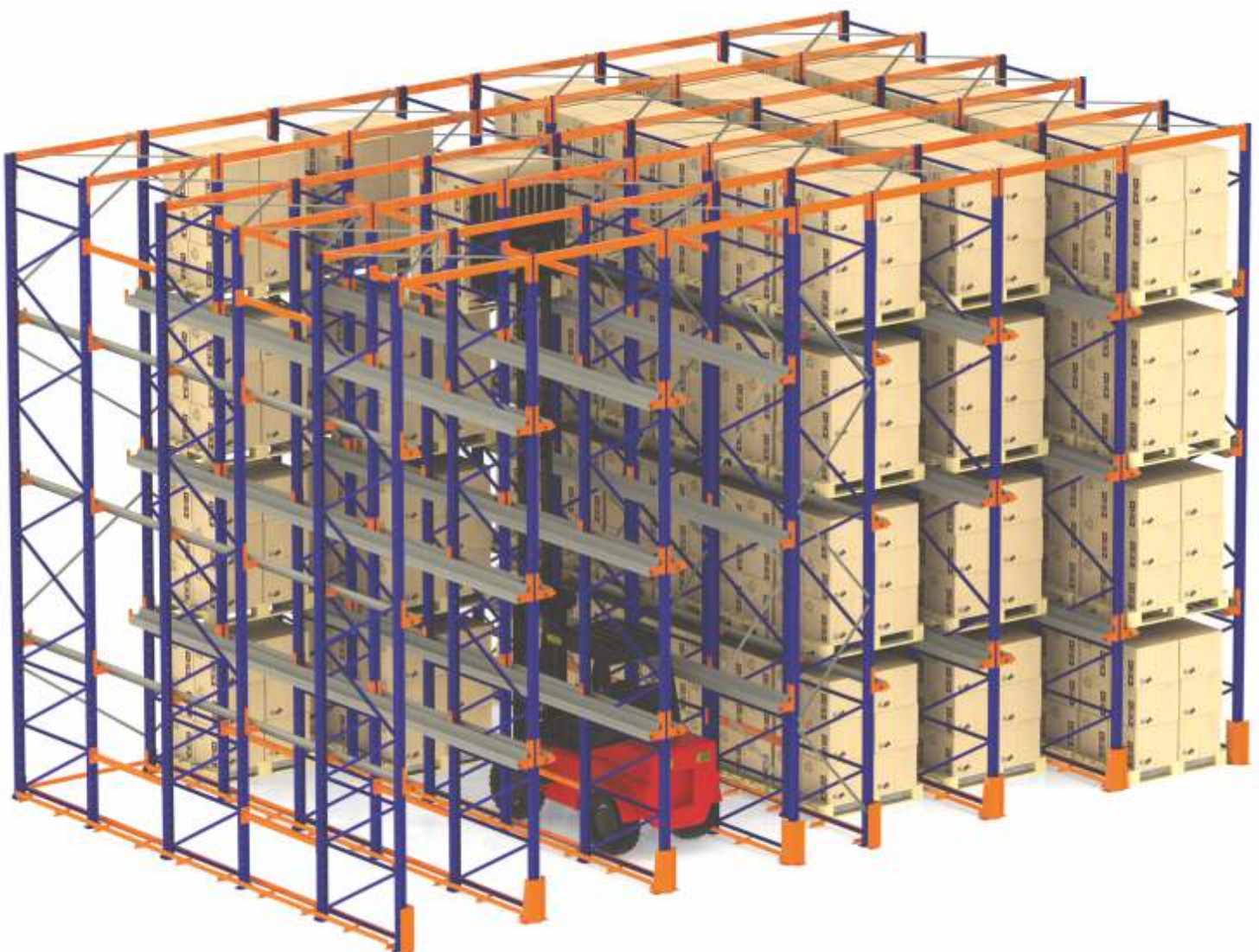
- ◆ Pallet racks can be used to store goods in meshed containers or individual goods on pallets.
- ◆ Pallet racks is a type of racking systems consists of a frame and traverses, forming sections. One front rack section can accommodate 2 to 4 pallets, depending on the traverse length.
- ◆ Dismountable structure of pallet racks, assembled in one or more lines of any length with any number of tiers, can be easily disassembled, moved to a new location and re-mounted.



DRIVE-IN PALLET RACKS

Drive-in pallet racks is a type of pallet racks, having a distinctive feature of the minimum number of inter-rack passes. This increases the storage capacity up to 80%. Shelving can be used for different types of load / unload:

- ◆ LIFO ("last in - first out") is implemented without through traffic. That is loading and unloading is performed on one side. It is used to store goods having a long shelf life.
- ◆ FIFO ("first in - first out"). That is loading is done on one side, and unloading – on the other.





- ◆ the loader works directly in the rack channel
- ◆ the loading starts from the upper tier

- ◆ can be installed in rooms with artificial climate
- ◆ the greatest efficiency is achieved at storage of the same type of seasonal items



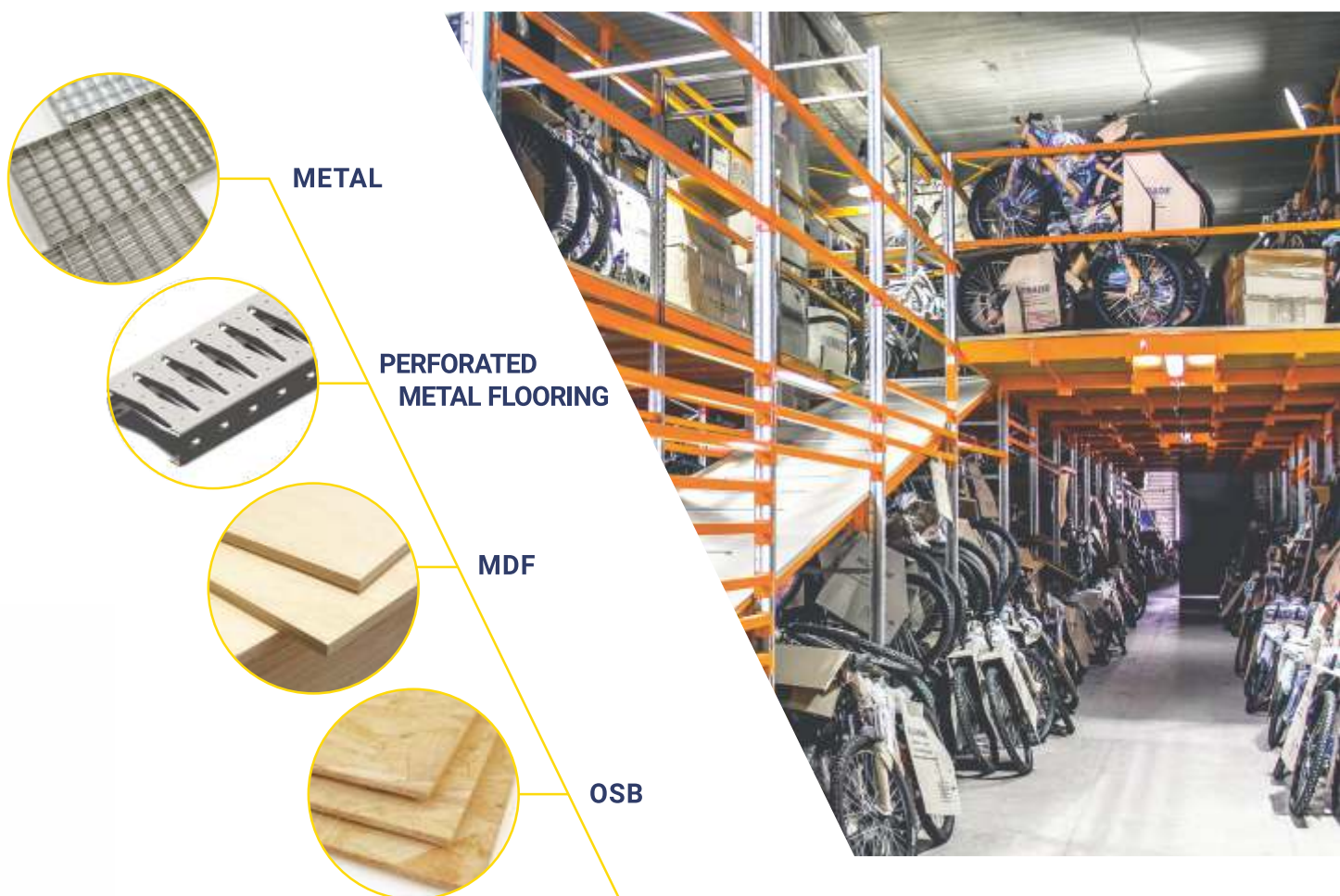
MEZZANINES

Mezzanines is a multi-tiered racking structure that permits installation of two or more levels and combination of pallets and shelf storage, effectively using the room height.

A distinctive feature of such racks is the manual processing of large volumes of goods of wide range and completion of orders by warehouse staff at the upper floors. Thus, all storage cells are accessible at any time.

Mezzanines are the consists of frames, floors, ladders and shelves. Upper levels are protected with railing, and loading areas are provided for loading / unloading. The level can be loaded with the help of any warehouse equipment - a loader or a stacker.





A Mezzanine can be covered with:

- ◆ perforated metal flooring
- ◆ the platform OSB/MDF boards
- ◆ the platform pressed metal lattice, with further hot-dip galvanizing

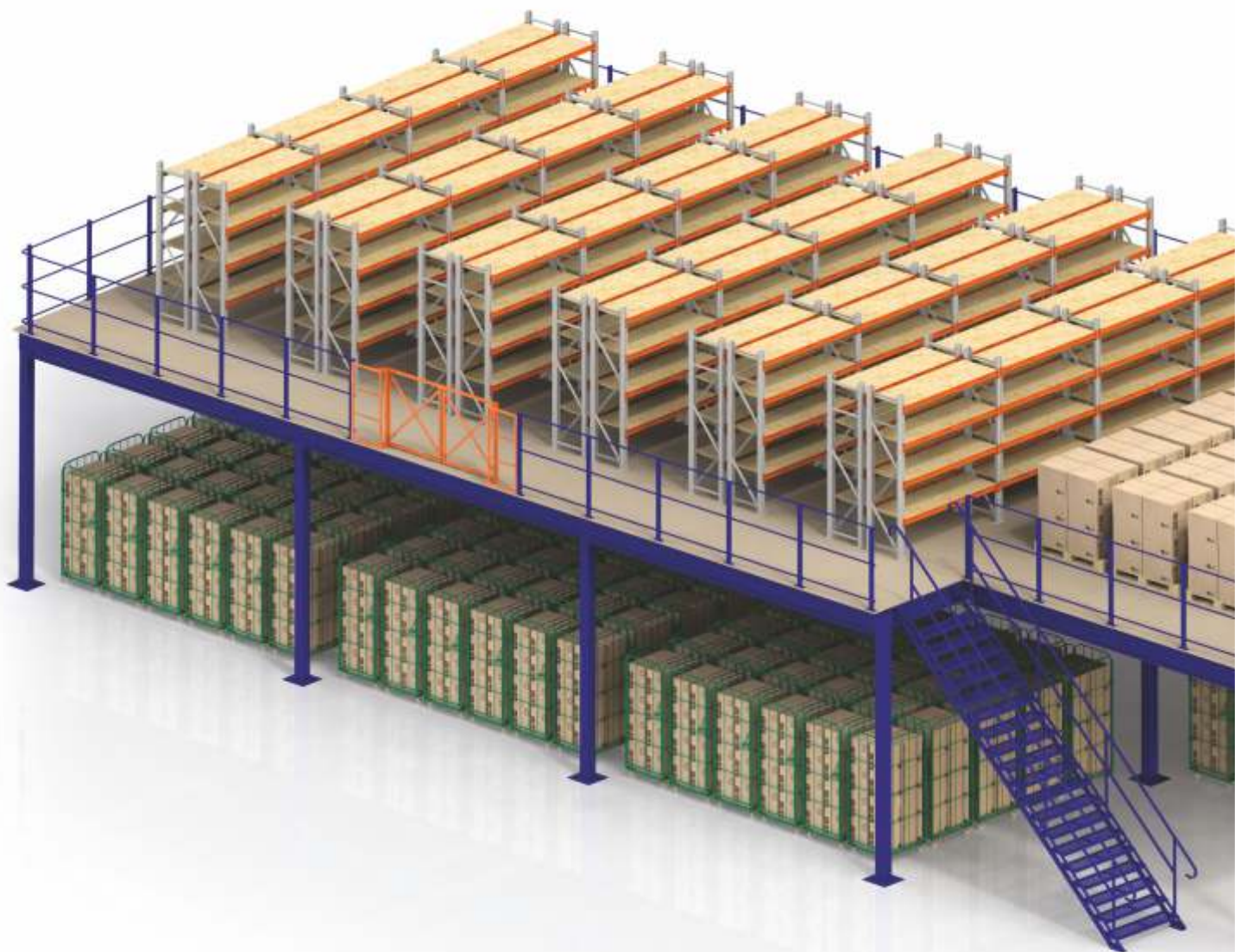


PLATFORM

A platform is a versatile metal structure, installed in rooms with high ceilings to create additional levels, which can be used as offices or for storage of inventory or finished products.

At installation of a platform, the first floor is still free to move or install the equipment due to the large distance between columns in contrast to frame racks based mezzanines.

A platform consists of columns and cross beams (where slabs are mounted), guards and ladders for access to the upper levels.





Structures with permissible load of 350 kg/sq.m to 1,500 kg/sq.m can be made for various operating conditions.



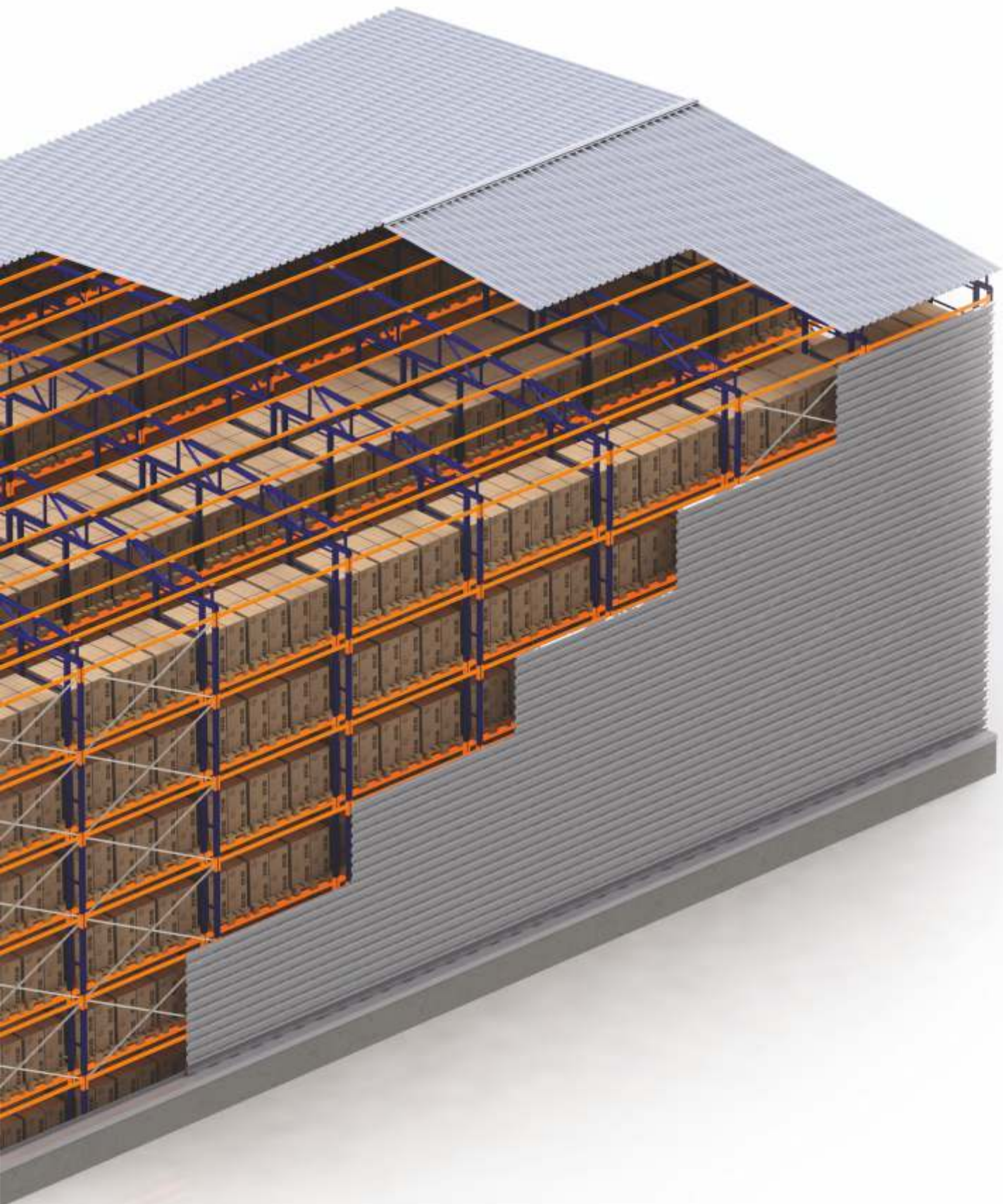
SELF-SUPPORTING WAREHOUSES

A self-supporting warehouse combines a separate warehouse building and a pallet racking system, functioning as the supporting structure, where wall panels and roofing materials are mounted.

A self-supporting warehouse is erected by means of bolted connections, without welding. This allows completion of a warehouse construction, if necessary dismantling it, moving it to a new location and re-mounting it. The warehouse height is limited only to the height of the warehouse racking frames. Warehouse capacity is not limited.



Building of self-supporting warehouses requires no major construction. Racking system is installed on a concrete pad and sheathed to protect the load from acts of nature (snow, rain, hail). Depending on the applied materials, such warehouses can be "cold" or weatherproof.



SHELF RACKS

Medium-load shelf racks of P-50 series can be used independently in industrial or domestic premises, warehouses, sales rooms, or can be integrated into other types of racks. Shelf racks are used for storage and selection of individual, not palletized cargos in boxes or bags.

For the shelf storage arrangement there can be combined metal, wooden, mesh shelves or single-piece MDF/ chipboard / OSB shelves used. Shelves can be transferrable or nested, depending on the type of arrangement on the traverse.

**TRANSFERRABLE
METAL SHELVES**



**NESTED
METAL SHELVES**



PERFORATED SHELVES



MESH SHELVES



PLANK SHELVES



CHIPBOARD / OSB SHELVES



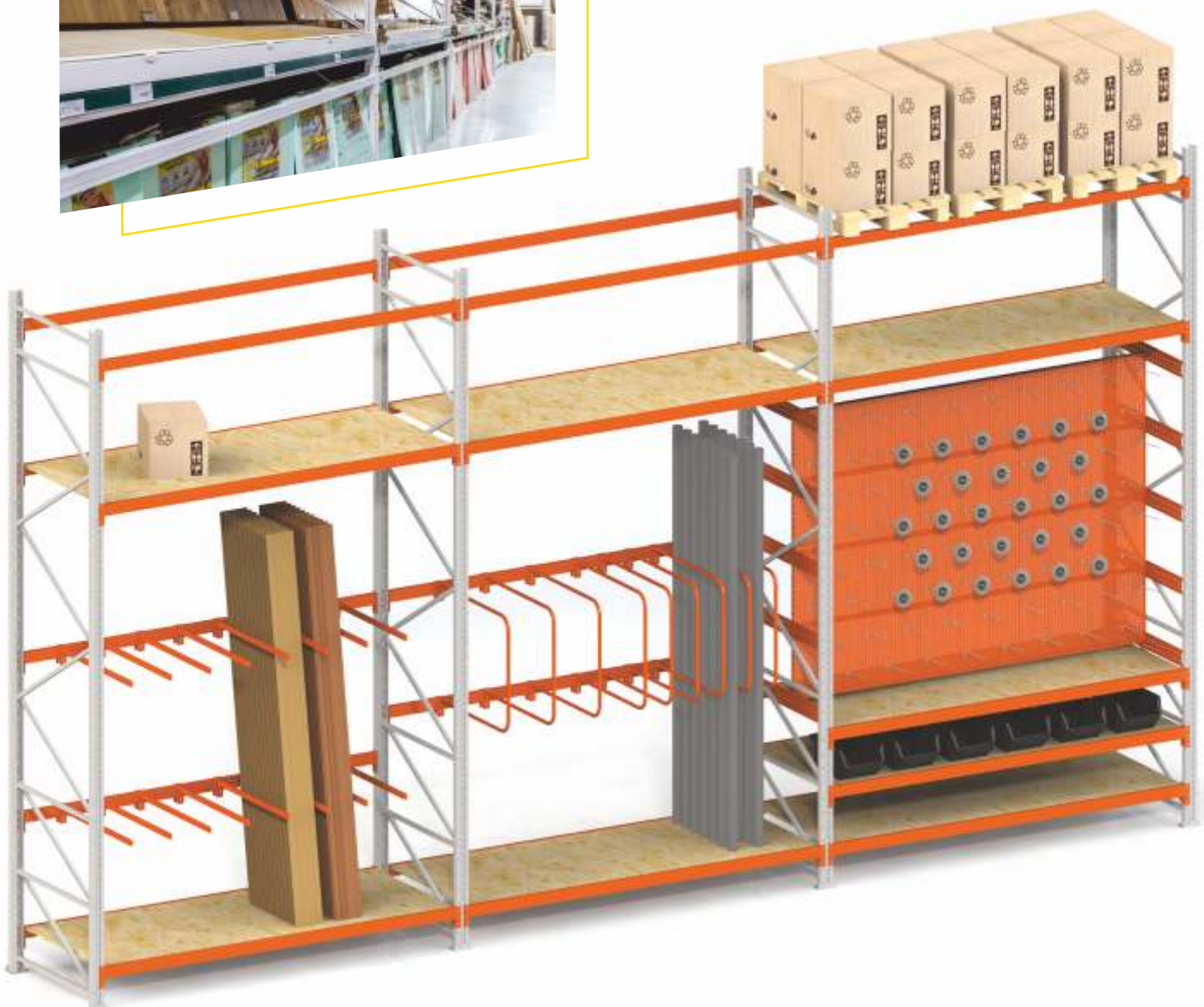


CASH & CARRY TRADING RACKS

Cash & Carry Trading racks on the basis of pallet racks are installed in small wholesale stores or DIY retail networks, organized on the principle of «a storehouse». The upper tiers are used for storage on pallets directly in the trading area and are serviced with loading equipment; tiers located in the customer access area are used as a shop window.



Trading racks for supermarkets contain various hinged Expositors and Accessories for the best disposition and demonstration of the full range of products, to help the buyer to select a particular product.





DEMONSTRATION EQUIPMENT



To demonstrate a buyer each item, specialized equipment has been individually developed.

Rack-integrated expositors are used as a storage cell and exhibition stand, enclosing inventory on the shelves. According to this principle, we have developed expositors for

door panels and expositors for ceramic tiles and laminate.

The upper pallet sections can be covered with hinged advertising modules or swing doors. Various depths of shelves can be provided with the help of crosspieces designed for this purpose.

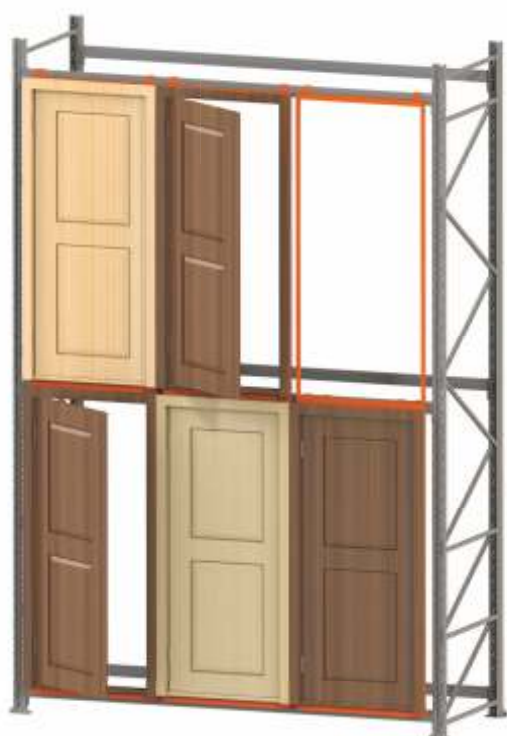




Sliding table systems are used for ceramic tiles and laminate, showing the collection and layout of the material. With such expositors, a buyer chooses the desired "pattern" and sizes by himself and can imagine how a particular product will look in the interior.



Expositors for door panels allow opening a door and inspecting it from all angles, with further taking of a desired model out of the storage cell, located behind a certain door.



ACCESSORIES



DOUBLED SEPARATOR



DISPLAYS FOR AXES



FRAME FOR MATS



SEPARATOR FOR SPADES

SEPARATOR FOR TABLETOPS



FRAME VERTICAL SEPARATORS



SEPARATOR

- ◆ plug-in
- ◆ delimiter
- ◆ incline
- ◆ of oval pipe



PRESSURE EXPOSITORS



Mobile pressure expositors allow capturing any panel of 19 mm to 110 mm thickness.

Such an expositor can be installed anywhere in a store as an advertising module, a door expositor or to hide stocks from buyers.

For safe panel installation, pressure plates are moved toward the center with the help of a slide, and are fixed with two screws. Exhibition samples are protected against chipping, scratches and dents that may occur at installation and mounting, with soft seals fastened on the pressure plates.

AN EXPOSITOR FOR DOOR PANELS' DISPLAY AND STORAGE



An expositor for door panels' display and storage allows splitting into sections by model or collection, and enables a buyer to take a desired door by himself, without a consultant's help.



Dimensions
2200 x 2040 x 2850 mm



One section capacity
10 pcs

HORIZONTAL EXPOSITOR FOR CERAMIC TILE



Horizontal expositor for ceramic tiles is made in accordance with the customer's size for any number of plates and of various dimensions depending on the tile type and purpose.

The plates are moved in the expositor plane.

BOOK DISPLAY



"BOOK" expositor can accommodate 20 collections of ceramic tiles in 10 plates.



Plate dimensions
1000 x 1980 mm



Load per plate can be up
to 200 kg

STORAGE RACK FOR TYRES

- ◆ Racks for storage and sale of tyres are equipped with tube traverses of circular cross-section to prevent tyre surface deformation.
- ◆ Structurally there are two types of racks of various depths and number of traverses per line, for storing tyres in one or two rows. Racks are made-to-measure with 1000 mm to 3000 mm long and 400 mm to 1600 mm deep traverses.
- ◆ Double-row racks of 3700 mm height are designed for 5 tiers at 700 mm tyre diameter. This rack enables rearrangement of internal traverses for storage of 3 pieces of small diameter wheels in depth or one large diameter wheel.
- ◆ Single row rack is useful for storage of tyres of various sizes. In this case, you only need to swap traverses to adjust the height between the tiers.

SINGLE ROW RACK



DOUBLE-ROW RACKS



SHELVING PROTECTIVE ELEMENTS

To protect racks from mechanical damage by loading equipment, angular and wedge bumpers are installed, and to protect the frame from frontal shocks - end row protection (ERP).

Bumpers and ERP are not connected to the racking system structure and are fastened to the floor with anchor bolts at a certain distance.



Angular bumper



Wedge bumper



End row protection (ERP)

To ensure the racking system rigidity, a truss system and parallel rows ropes are used.

TRUSS SYSTEMS



PALLET LIMITER

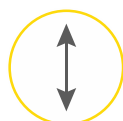


ROPES

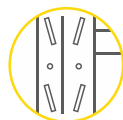


ARCHIVE SHELF RACKS OF SI-30 SERIES

- ◆ Archive rack is a prefabricated structure, which can be collected in one or more sections of any length, any number of racks and shelves, and can be built-in to premises of complex geometry.
- ◆ Vertical racks are made of bent steel profile with punched hooks for mounting of shelves at various levels.



Height of racks
max 3000 mm



Hooks on the rack
with a step of 100 mm



Load per section
max 1000 kg

- ◆ bolt-free rack mounting
- ◆ the rack basis is a center plate



- ◆ rack depth and length can be increased if required



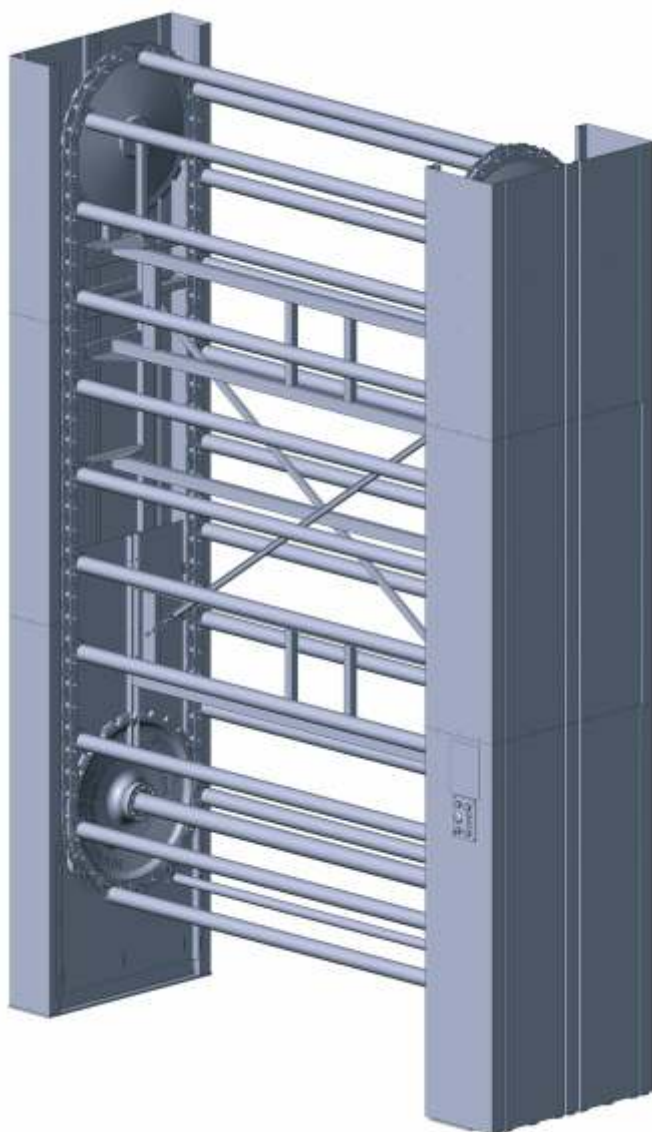


- ◆ Rack shelves are made of galvanized sheet steel. Dimensions of shelves and permitted loads are given in the table.

Width, mm	800				1000				1000			
Depth, mm	100	200	500	600	100	200	500	600	100	200	500	600
Load, kg	150	000	000	050	100	150	150	000	80	100	100	150

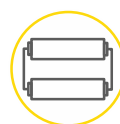
- ◆ Reinforced structures of higher capacity can be produced.

PATERNOSTER FOR ROLL MATERIALS



Paternoster for linoleum / carpet is a stand for 10-31 rolls (max 660 mm).

The number of paternoster loading axes in the table is indicated for linoleum and carpet of standard diameter (380-580 mm). If necessary, you can change the distance between the axes of the loading in 100 mm increments.



Hanging step
400/600 mm



Power consumption
1.5 kW

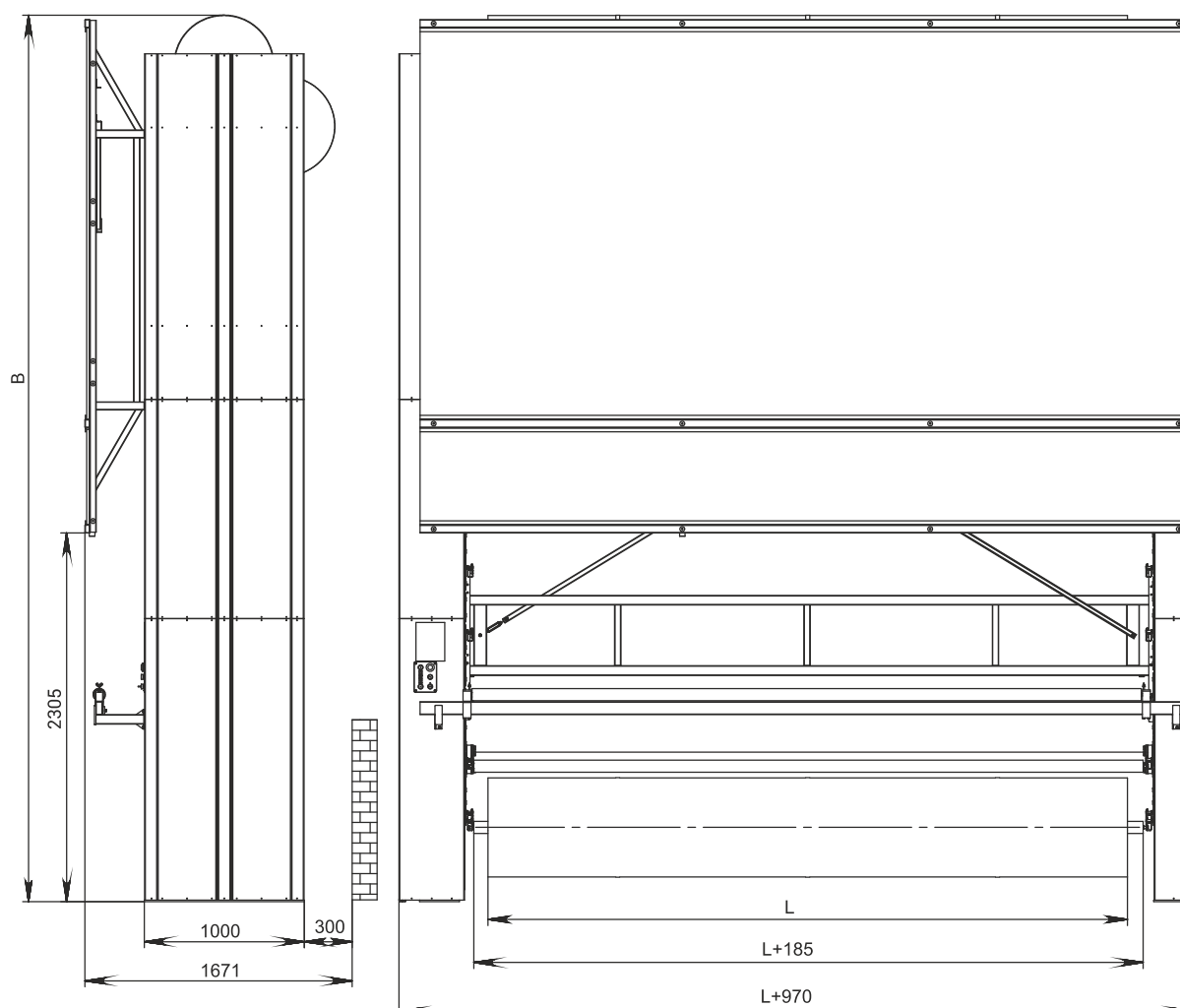


Voltage
380/220 V



Rated frequency
50 Hz

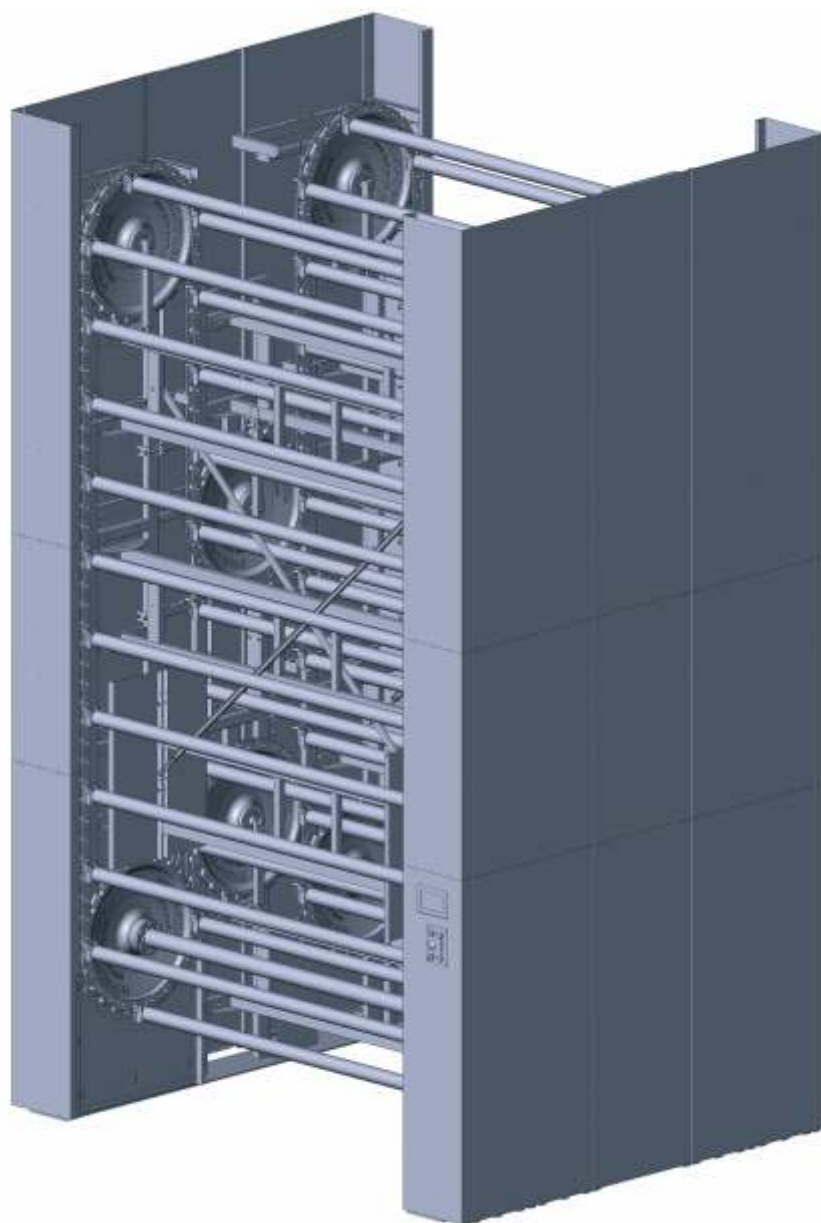
Number of rolls d 380 mm	Conditional paternoster height H, mm	Paternoster overall height (per roll), mm	Linoleum width, mm						Drive power, kW / V
			Vendor code						
			2000	2500	3000	3500	4000	5000	
16	3500	3480	A203516CA	A253516CA	A303516CA	A353516CA	A403516CA	A403516CA	1,5/220
18	3900	3880	A203518CA	A253518CA	A303518CA	A353518CA	A403518CA	A403518CA	
18	4000	3980	A204018CA	A254018CA	A304018CA	A354018CA	A404018CA	A404018CA	
19	4200	4180	A204219CA	A254219CA	A304219CA	A354219CA	A404219CA	A404219CA	
21	4500	4480	A204521CA	A254521CA	A304521CA	A354521CA	A404521CA	A404521CA	
23	5000	4980	A205023CA	A255023CA	A305023CA	A355023CA	A405023CA	A405023CA	
26	5500	5480	A205526CA	A255526CA	A305526CA	A355526CA	A405526CA	A405526CA	
27	5700	5780	A205727CA	A255727CA	A305727CA	A355727CA	A405727CA	A405727CA	2,2/220
28	6000	6080	A206028CA	A256028CA	A306028CA	A356028CA	A406028CA	A406028CA	
31	6600	6680	A206631CA	A256631CA	A306631CA	A356631CA	A406631CA	A406631CA	



Roll width, mm	Paternoster width, mm	Paternoster depth, mm
2000	2970	1000
2500	3470	
3000	3970	
3500	4470	
4000	4970	
5000	5970	

Number of rolls d580 mm	Conditional paternoster height H, mm	Paternoster overall height (per roll), mm	Carpet width, mm						Drive power, kW / V
			Vendor code						
			2000	2500	3000	3500	4000	5000	
10	3500	3580	A203510CE	A253510CE	A303510CE	A353510CE	A403510CE	A503510CE	1,5/220
12	3900	3980	A203512CE	A253512CE	A303512CE	A353512CE	A403512CE	A503512CE	
12	4000	4080	A204012CE	A254012CE	A304012CE	A354012CE	A404012CE	A504012CE	
13	4200	4280	A204213CE	A254213CE	A304213CE	A354213CE	A404213CE	A504213CE	
14	4500	4580	A204514CE	A254514CE	A304514CE	A354514CE	A404514CE	A504514CE	
16	5000	5080	A205016CE	A255016CE	A305016CE	A355016CE	A405016CE	A505016CE	
17	5500	5580	A205517CE	A255517CE	A305517CE	A355517CE	A405517CE	A505517CE	
18	5700	5780	A205718CE	A255718CE	A305718CE	A355718CE	A405718CE	A505718CE	2,2/220
19	6000	6080	A206019CE	A256019CE	A306019CE	A356019CE	A406019CE	A506019CE	
21	6600	6680	A206620CE	A256620CE	A306620CE	A356620CE	A406620CE	A506620CE	

MULTI-ROW PATERNOSTER FOR ROLLED MATERIALS «SKLADOCK» M2



Paternoster Skladock M2 and M3 allows you to arrange a large number of goods (rolls) on a small area, while it has a demonstration area.



Power consumption
1.5 kW



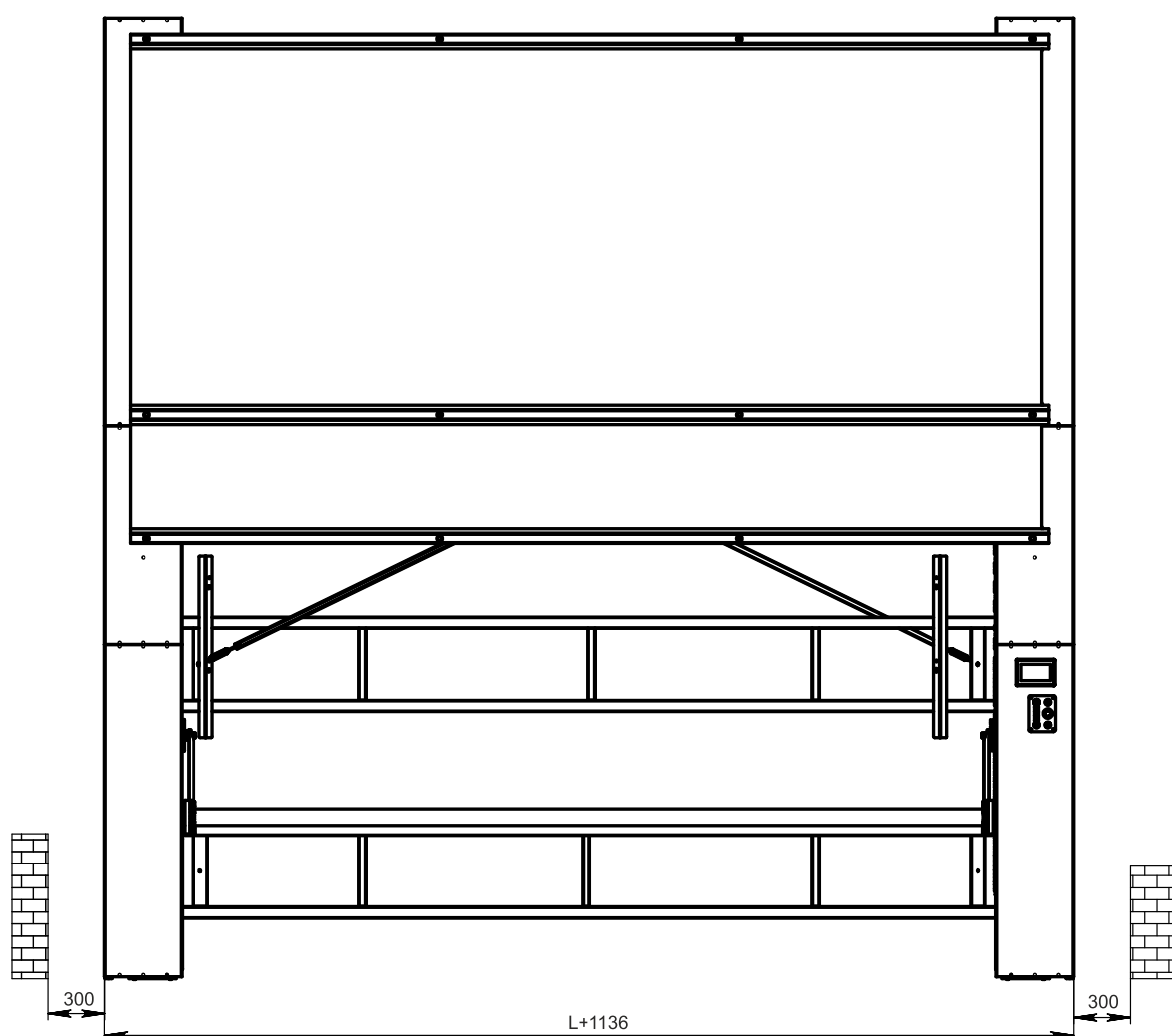
Voltage
380/220 V



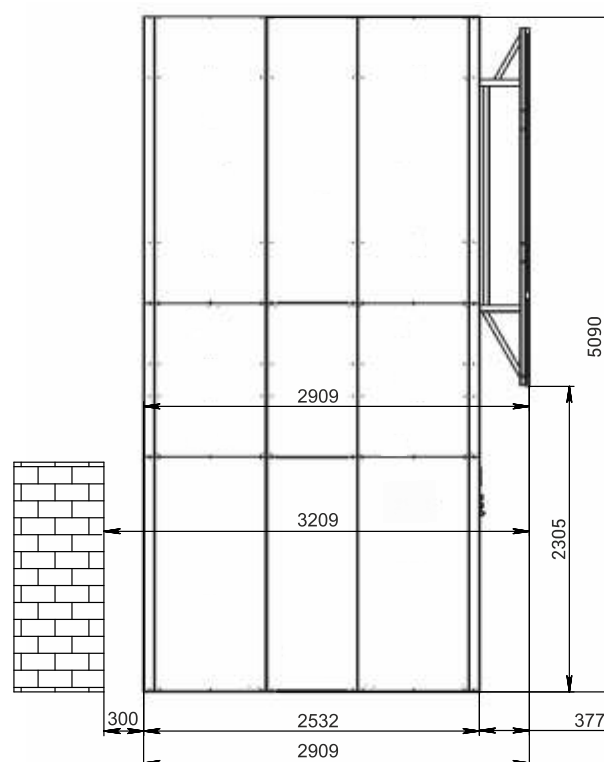
Rated frequency
50 Hz

Number of rolls d580 mm	Conditional paternoster height H, mm	Paternoster overall height (per roll), mm	Carpet width, mm							Drive power, kW / V
			Vendor code							
			2000	2500	3000	3500	4000	4500	5000	
30	5000	5080	A205030M2M	A255030M2M	A305030M2M	A355030M2M	A405030M2M	A455030M2M	A505030M2M	1,5/220

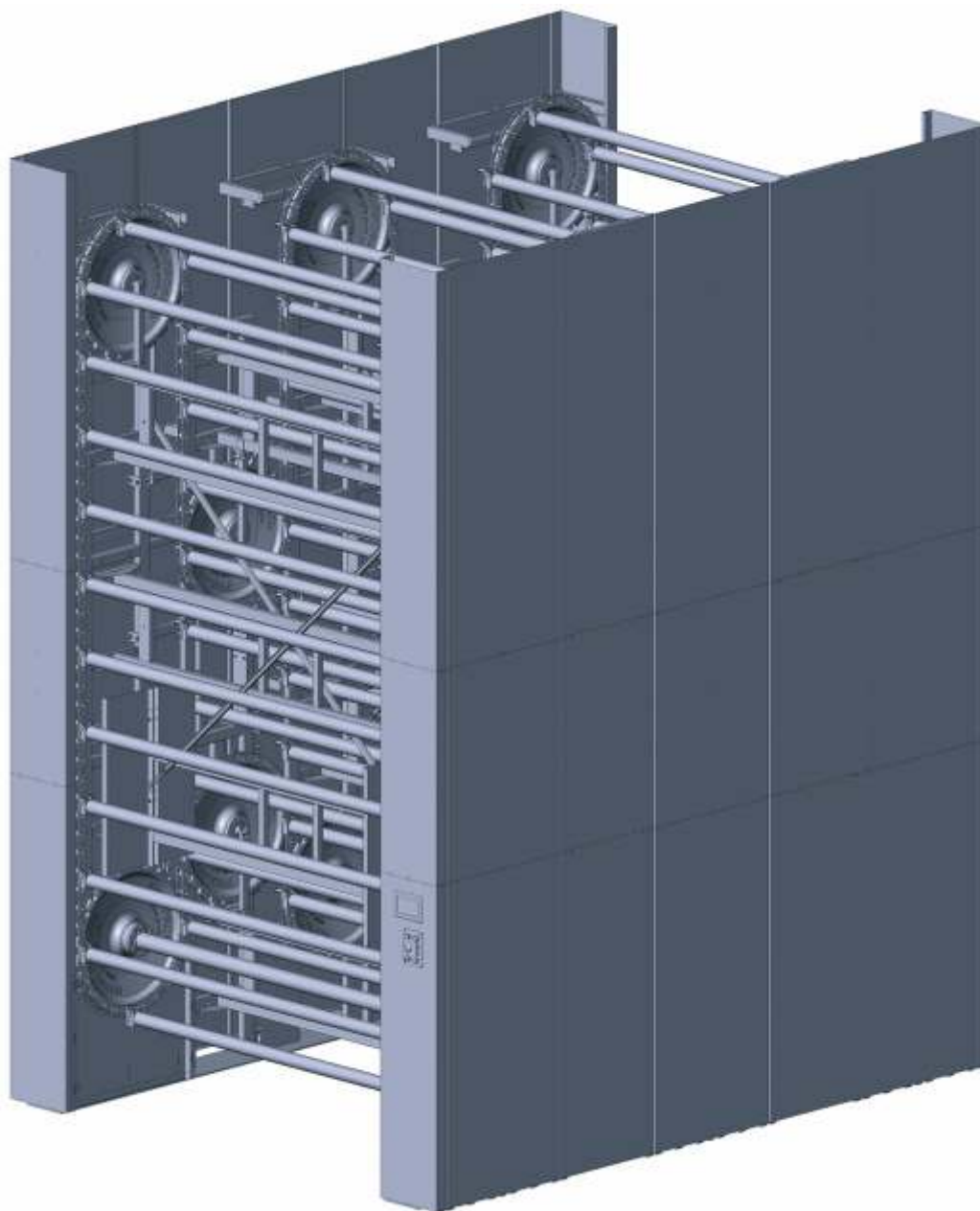
Number of rolls d380 mm	Conditional paternoster height H, mm	Paternoster overall height (per roll), mm	Linoleum width, mm							Drive power, kW / V
			Vendor code							
			2000	2500	3000	3500	4000	4500	5000	
45	5000	5080	A205045M2M	A255045M2M	A305045M2M	A355045M2M	A405045M2M	A455045M2M	A505045M2M	1,5/220



Roll width, mm	Paternoster width, mm	Paternoster depth, mm
2000	3136	2532
2500	3636	
3000	4136	
3500	4636	
4000	5136	

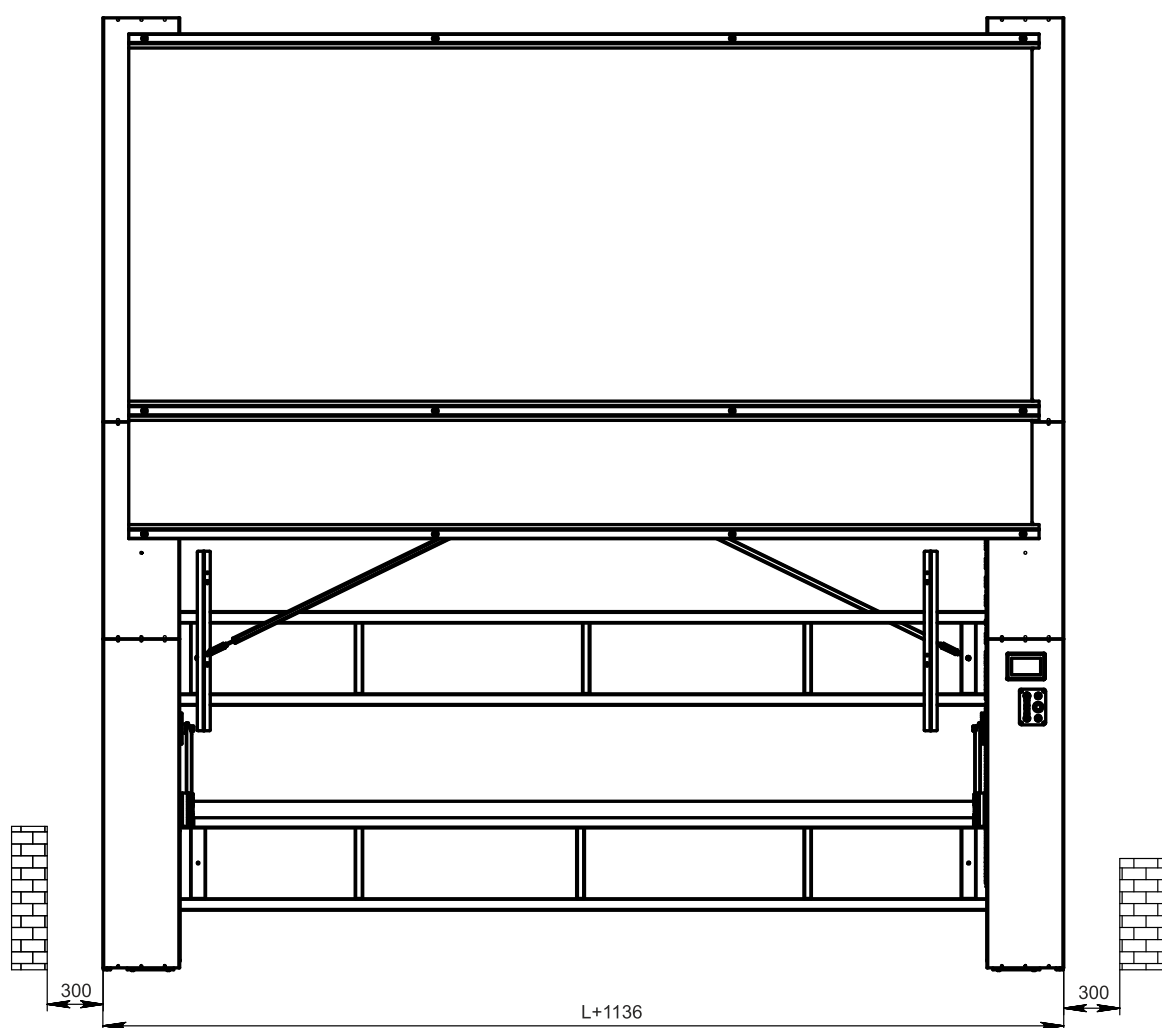


MULTI-ROW PATERNOSTER FOR ROLLED MATERIALS «SKLADOCK» M3



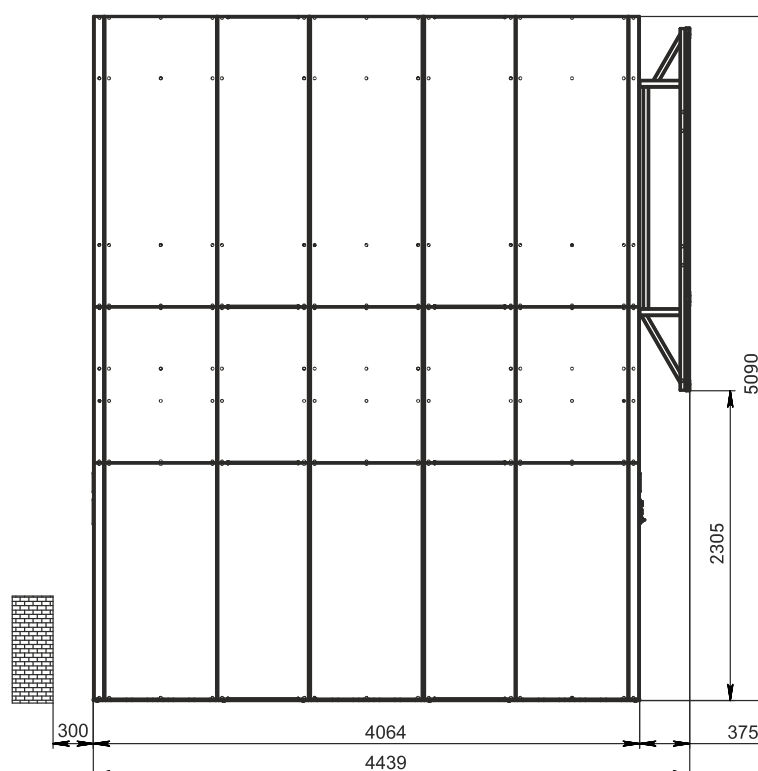
Number of rolls d580 mm	Conditional paternoster height H, mm	Paternoster overall height (per roll), mm	Carpet width, mm							Drive power, kW / V
			Vendor code							
			2000	2500	3000	3500	4000	4500	5000	
44	5000	5080	A205044M3M	A255044M3M	A305044M3M	A355044M3M	A405044M3M	A455044M3M	A505044M3M	2x1,5/380

Number of rolls d380 mm	Conditional paternoster height H, mm	Paternoster overall height (per roll), mm	Linoleum width, mm							Drive power, kW / V
			Vendor code							
			2000	2500	3000	3500	4000	4500	5000	
67	5000	5080	A205067M3M	A255067M3M	A305067M3M	A355067M3M	A405045M3M	A455067M3M	A505067M3M	2x1,5/380



Roll width, mm	Paternoster width, mm	Paternoster depth, mm
2000	3136	4064
2500	3636	
3000	4136	
3500	4636	
4000	5136	

Paternoster Skladock M3 expands its technical capabilities by increasing the number of rolls and adding an additional demonstration area to access the product from the opposite side of the equipment.



PATERNOSTER AUTOMATED CONTROL SYSTEM



The paternoster automated control system is designed to supply the selected roll to the consumer, and also allows you to assign the desired article to each type of floor covering.

The installation is based on the «Delta 7» touch panel and an integrated programmable controller.

The system is controlled by the operator using buttons, as well as a panel - for displaying the status and entering data.

Button control completely duplicates the automatic feed system.



The name of indicators	Unit	Meaning
Linear speed of the chain	m/min	5
Maximum permissible roll diameter	mm	600
Maximum permissible roll weight	kg	280
Maximum difference between the weight of rolls on opposite sides of the paternoster	kg	600
Total power of the installed electric motors Paternoster motor (gear- motor)	kW	1,5; 2,2
Total power of installed electric motors Skladock M2 and M3 (2 gear- motors)	kW	1,5; 2x1,5
Nominal supply voltage	V	220/380
Rated current frequency	Hz	50



ADVERTISING MODULE FOR SAMPLES ON PATERNOSTER



Vendor code	Length (L) mm
BP0042.2000	2000
BP0042.2500	2500
BP0042.3000	3000
BP0042.3500	3500
BP0042.4000	4000
BP0042.5000	5000

Advertising module for samples on Paternoster - is a structure with elements for fastening samples, which is mounted on the facade of the paternoster and performs the function of protection.

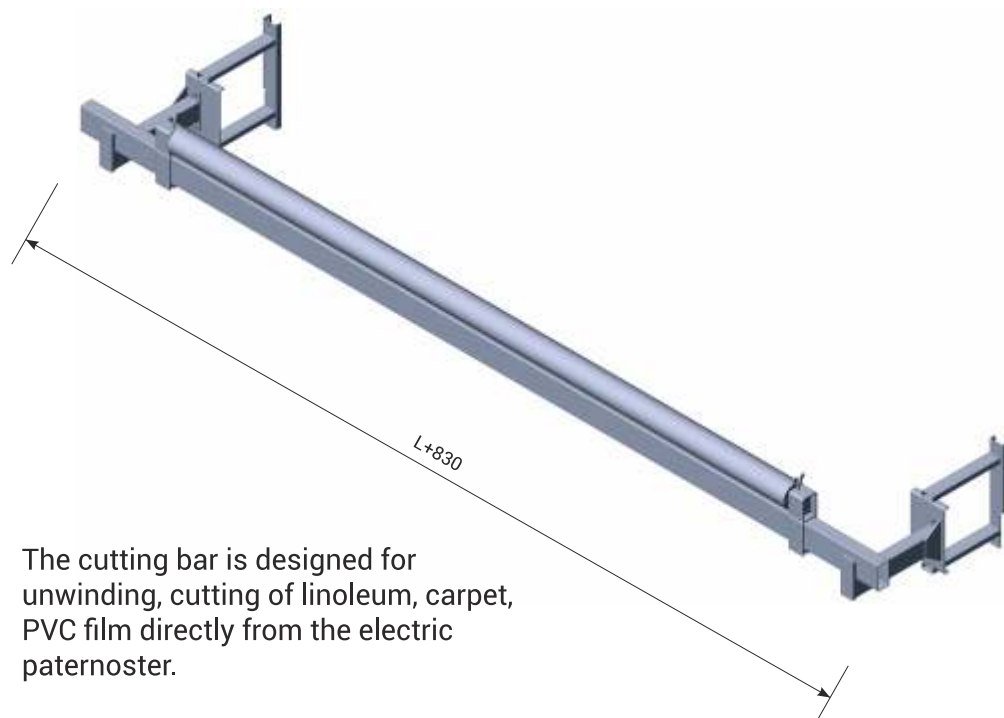
REAR SAFETY SCREEN FOR PATERNOSTER



Vendor code	Length (L) mm
BP0042.2000	2000
BP0042.2500	2500
BP0042.3000	3000
BP0042.3500	3500
BP0042.4000	4000
BP0042.5000	5000

Rear safety screen - a structure that is mounted on the back of the paternoster and serves as a protective shield.

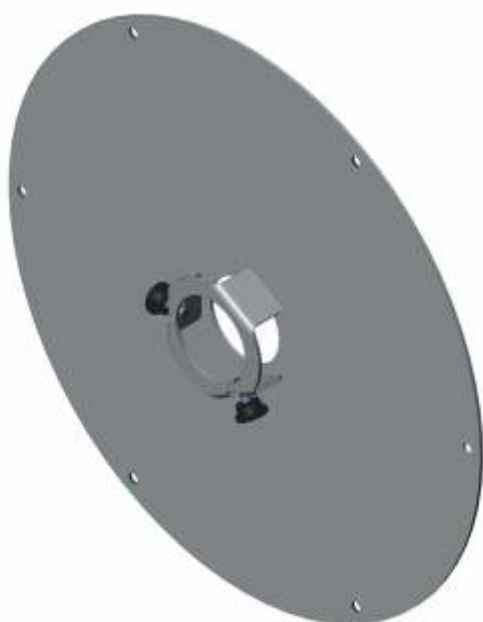
CUTTING BAR FOR PATERNOSTER WITHOUT COUNTER



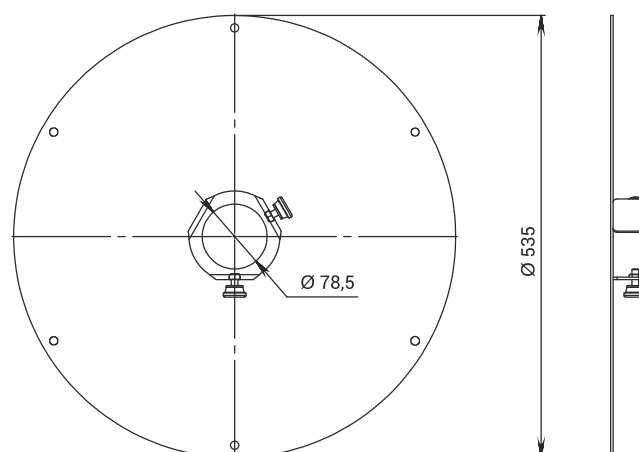
Vendor code	Length (L), mm
FNB2000	2000
FNB2500	2500
FNB3000	3000
FNB3500	3500
FNB4000	4000
FNB5000	5000

The cutting bar is designed for unwinding, cutting of linoleum, carpet, PVC film directly from the electric paternoster.

PROTECTIVE FLANGE



Vendor code	Name
BP0006X_60mm	Protective flange 60/540 for carpet rolls on a shaft 60 mm to paternoster, black color
BP0006X_76mm	Protective flange 76/540 for carpet rolls on a shaft 76 mm to paternoster, black color



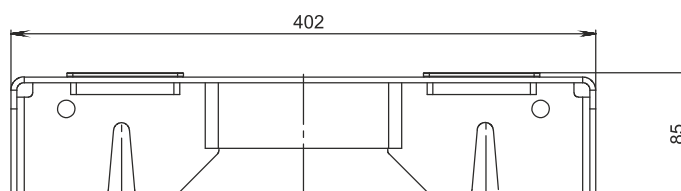
Serves as a protective element for carpet rolls from getting threads into the paternoster device, as well as for fixing the roll

PROTECTION OF THE FACADE CLADDING OF PATERNOSTER

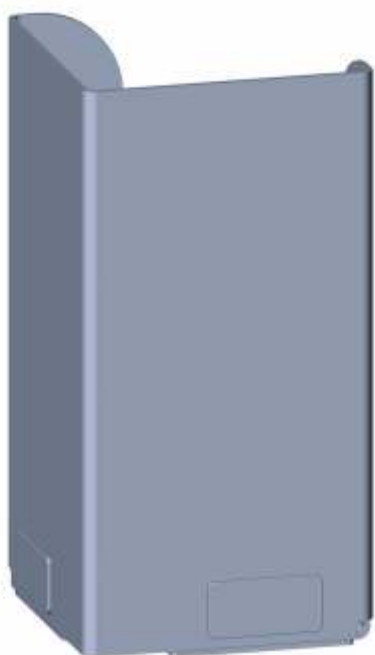


Vendor code

BP0034X

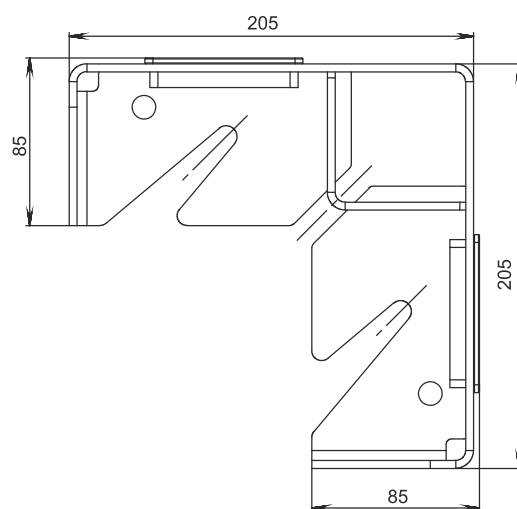


PROTECTION OF THE CORNER CLADDING OF THE PATERNOSTER



Vendor code

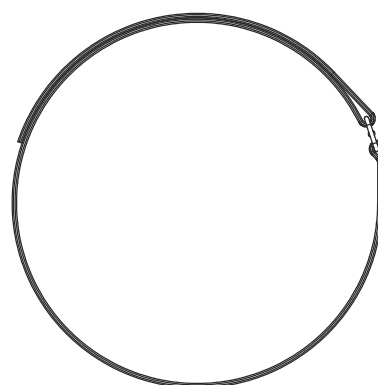
BP0035X



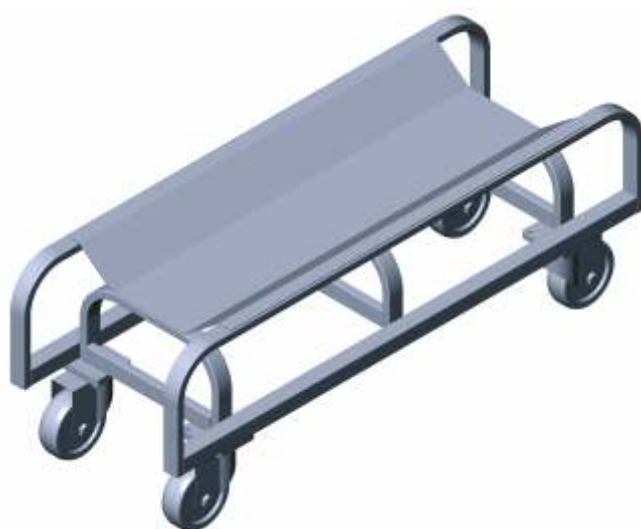
BELT FOR FIXING ROLLS



Vendor code	Name
E110110	Belt for fixing carpet, diameter 610 mm
E110120	Belt for fixing linoleum diameter 350 mm



ROLL MATERIAL LOADING TROLLEY



Vendor code

EP0065X

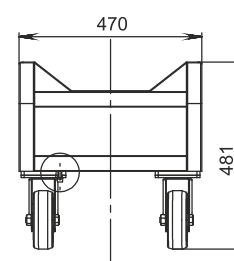
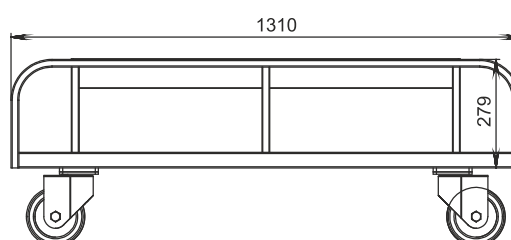


Carrying capacity
up to 400 kg



Wheel diameter
150 mm

It is recommended to transport rolls over 3000 mm wide with two trolleys.

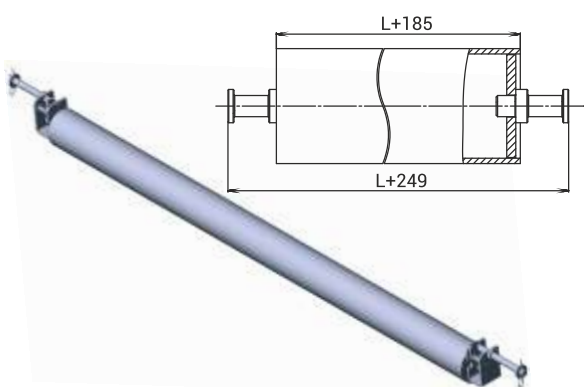


TRANSPORT SHAFTS FOR PATERNOSTER TYPE SKLADOCK (ON BEARINGS)



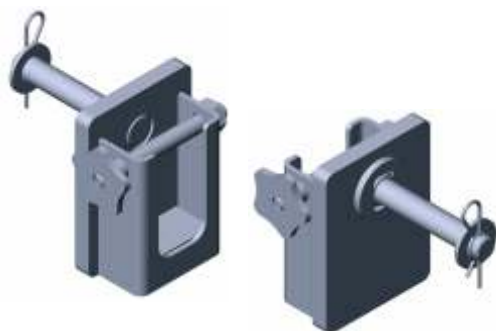
Vendor code	Name
SL200020CE	Additional shaft 2 m, complete with supports (SKLADOCK)
SL250020CE	Additional shaft 2,5 m, complete with supports (SKLADOCK)
SL300020CE	Additional shaft 3 m, complete with supports (SKLADOCK)
SL350020CE	Additional shaft 3,5 m, complete with supports (SKLADOCK)
SL400020CE	Additional shaft 4 m, complete with supports (SKLADOCK)
SL500020CE	Additional shaft 5 m, complete with supports (SKLADOCK)

PATERNOSTER TRANSPORT SHAFTS

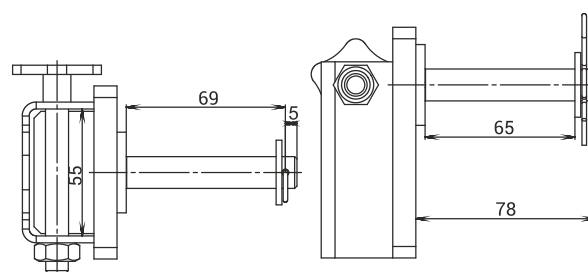


Vendor code	Name
B200020CE	Additional shaft 2 m, complete with supports
B250020CE	Additional shaft 2,5 m, complete with supports
B300020CE	Additional shaft 3 m, complete with supports
B350020CE	Additional shaft 3,5 m, complete with supports
B400020CE	Additional shaft 4 m, complete with supports
B500020CE	Additional shaft 5 m, complete with supports

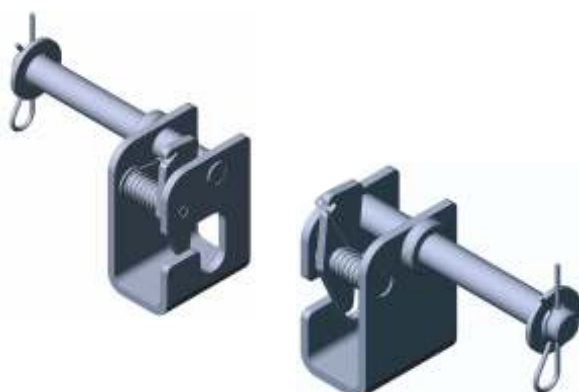
SUPPORT OF THE TRANSPORT SHAFT FOR PATERNOSTER TYPE SKLADOCK (ON BEARINGS)



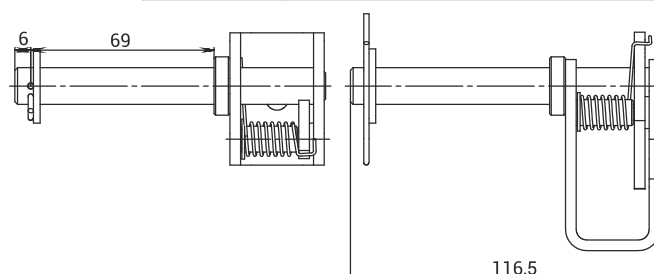
Vendor code	Name
SL110040P	Transport shaft support (Skladock)



TRANSPORT SHAFT SUPPORT



Vendor code	Name
B110040P	Transport shaft support



ISPAHAN STAND

Ispahan stand is designed for vertical display of carpets.

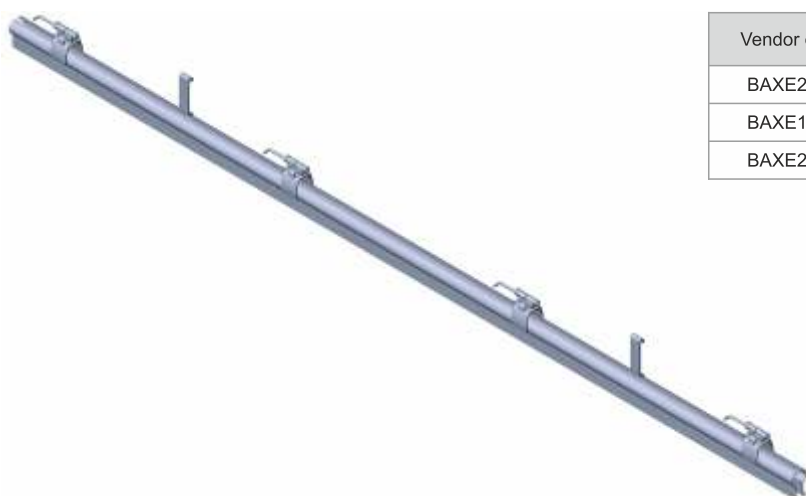


Vendor code	Name
BAXE1724_40	Ispahan stand, 40 carpets 1.7 * 2.4 clamp tongs, complete with podium B695 2705*1895*2565*1800 (A*B*C*D)
BAXE1724_50	Ispahan stand, 50 carpets 1.7 * 2.4 clamp tongs, complete with podium B696 2705*1895*2565*1800 (A*B*C*D)
BAXE22030_40	Ispahan stand, 40 carpets 2*3 clamp tongs, complete with podium B695 3305*2195*2065*2100 (A*B*C*D)
BAXE2030_50	Ispahan stand, 50 carpets 2*3 clamp tongs, complete with podium B695 3305*2195*2065*2100 (A*B*C*D)
BAXE2535_20	Ispahan stand, 20 carpets 2,5*3,5 clamp tongs, complete without podium 3780*2695*2065*2600 (A*B*C*D)
BAXE2535	Ispahan stand, 40 carpets 2,5*3,5 clamp tongs, complete without podium 3780*2695*2065*2600 (A*B*C*D)

The construction of the expositor consists of two support frames, a lower headroom, a base and cantilever guides (pages). The carpet is hung on both sides of the guides with clamps.

The guides are equipped with elements that prevent the carpet from being removed with clips, to prevent accidental or deliberate removal of the hanging elements.

ADDITIONAL FORCEPS



Vendor code	Name
BAXE2000	Carpet stand forceps 2,0 extra
BAXE1700	Carpet stand forceps 1,7 extra
BAXE2500	Carpet stand forceps 2,5 extra

MOBILE CUTTING DEVICE



Vendor code	Name
F400070	Electrical measuring machine for measuring, cutting floor coverings 4 m wide. Electronic programmable counter, adjustment for the type and thickness of the floor covering.
CUT4000	Knife for cutting floor coverings

Mobile cutting device - is an electrical measuring device for measuring and cutting floor coverings from an electric paternoster or other storage device.

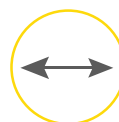
The length is counted using an electronic angular displacement sensor (encoder), which ensures high counting accuracy (maximum deviation).



Acceptable roll diameter 300 mm



Acceptable roll weight 200 kg



Maximum roll width 4000 mm



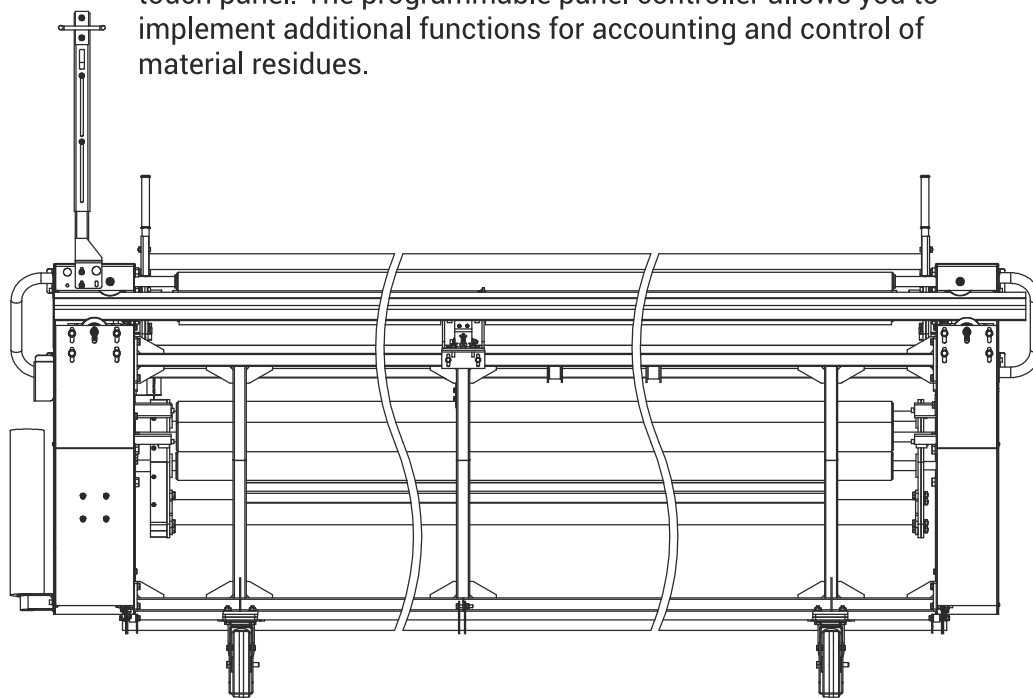
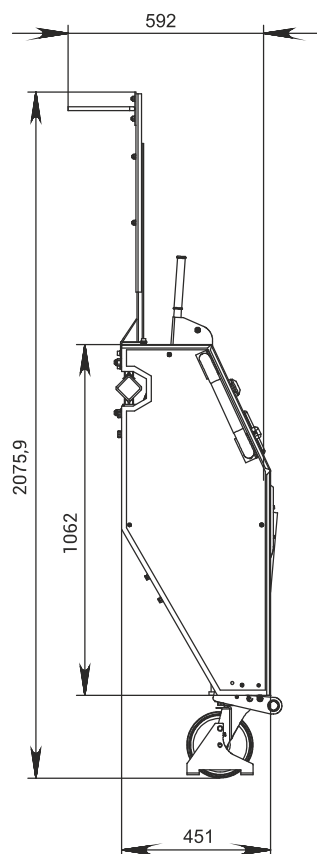
Display accuracy +/- 0.5%



Voltage 220 V

The cutting device is equipped with a guide with a slot for a knife, with the help of which a straight and fast cutting of the coating with a hand knife is carried out, without maximum effort.

Indication, access control, office are implemented using an industrial touch panel. The programmable panel controller allows you to implement additional functions for accounting and control of material residues.

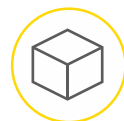


The device is powered through a movable trolley-type closed busbar, which allows the device to move along a row of serviced equipment, provides the device with mobility and operational safety.

The device is equipped with special brackets for storing the used packaging material and easy access to them.



NESTABLE ROLL CONTAINER ARK.01



Dimensions
800 x 680 x 1805 mm



Container load
capacity 550 kg



Shelf load capacity
150 kg



Electroplating



Castors 125 mm

NESTABLE ROLL CONTAINER ARK.17



Dimensions
790 x 700 x 1585 mm



Container load
capacity 550 kg



Shelf load capacity
150 kg

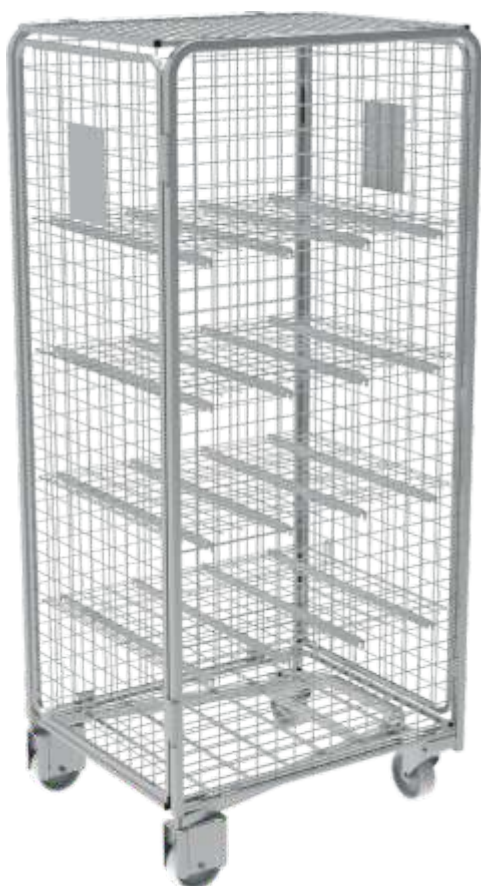


Electroplating

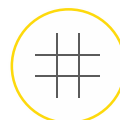


Castors 125 mm

NESTABLE ROLL CONTAINER ARK.22



Dimensions
830 x 695 x 1825 mm



Mesh
50x50 mm



Container load
capacity 550 kg



Can be completed with
up to 4 shelves



Electroplating



Castors 125 mm



NESTABLE ROLL CONTAINER FFR.03



Dimensions
790 x 700 x 1740 mm



Container load
capacity 550 kg



Electroplating
or powder coating



Castors 125 mm

NESTABLE ROLL CONTAINER FFR.04



Dimensions
790 x 700 x 1740 mm



Container load
capacity 500 kg



Electroplating
or powder coating



Castors 125 mm

NESTABLE ROLL CONTAINER FFR.05



Dimensions
790 x 700 x 1740 mm



Container load
capacity 550 kg



Electroplating
or powder coating



Castors 125 mm



DEMOUNTABLE ROLL CONTAINER RKM



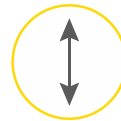
2-sided



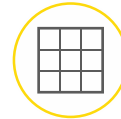
3-sided



4-sided



Height:
RKM.01 - 1830 mm
RKM.02 - 1630 mm
RKM.03 - 1530 mm



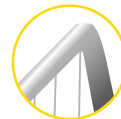
Base dimension
700 x 790 mm



Container load
capacity 550 kg



Shelf load capacity
150 kg



Electroplating
or powder coating



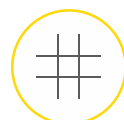
Castors 100 mm



ROLL CONTAINER RKM.04



Dimensions
830 x 695 x 1825 mm



Mesh
75 x 75 mm



Container load
capacity 550 kg



Shelf load capacity
100 kg



Electroplating
or powder coating



Castors 100 mm

ANTI-THEFT ROLL CONTAINER RKM.06



Dimensions
860 x 750 x 1800 mm



Mesh
50x50 mm



Container load
capacity 600 kg

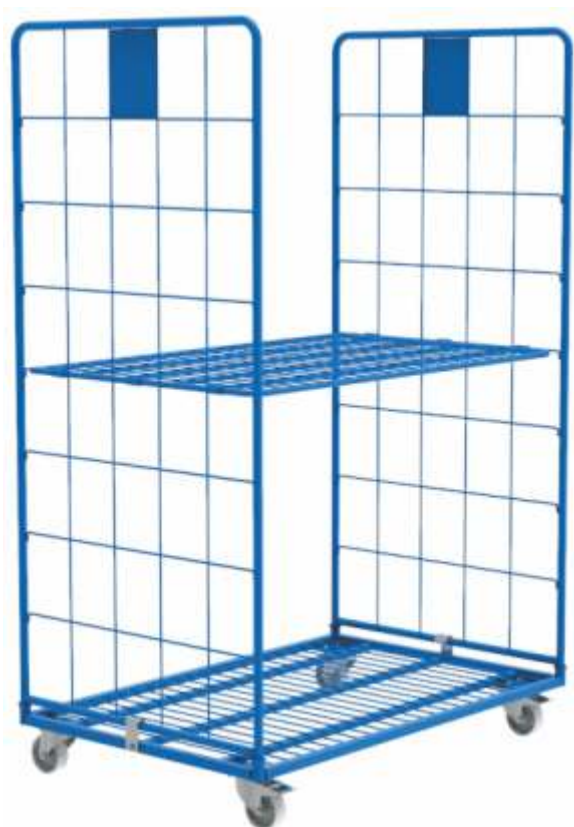


Electroplating
or powder coating



Castors 100 mm

MAXI ROLL CONTAINER RKM.13



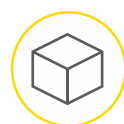
2-sided



3-sided



4-sided



Dimensions
1200 x 790 x 1833 mm



Container load
capacity 550 kg

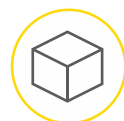


Electroplating
or powder coating



Castors 125 mm

MAXI+ ROLL CONTAINER RKM.14



Dimensions
1200 x 790 x 1833 mm



Container load
capacity 550 kg



Electroplating
or powder coating



Castors 125 mm

MESH ROLL CONTAINER RKM.15



Dimensions
1200 x 790 x 1677 mm



Container load
capacity 550 kg

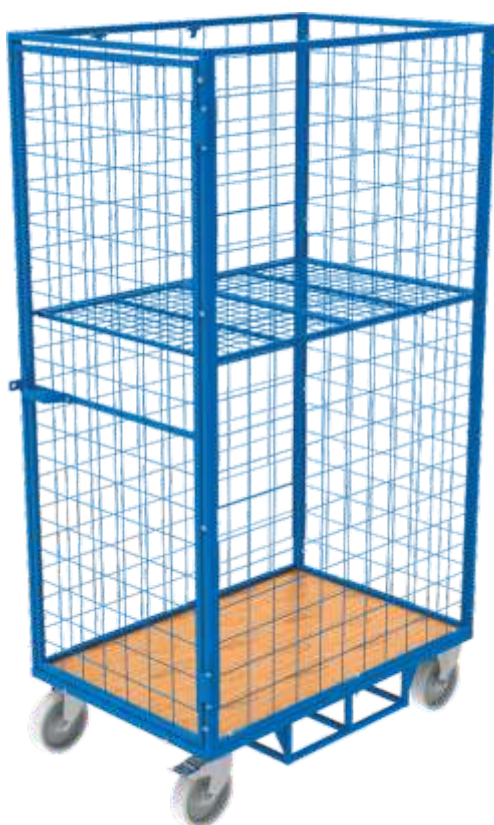


Electroplating
or powder coating

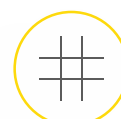


Castors 125 mm

TRANSPORT CONTAINER KM.06



Dimensions
1200 x 800 x 2200 mm



Mesh
50 x 50 mm



Container load
capacity 600 kg

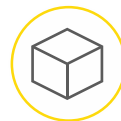


Shelf load capacity
100 kg

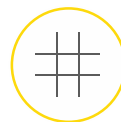


Castors 200 mm

CONTAINER KM.15



Dimensions
1200 x 800 x 1920 mm



Mesh
50 x 50 mm



Container load
capacity 500 kg



Shelf load capacity
150 kg



Electroplating
or powder coating



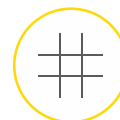
Castors 125 mm



ORDER PICKING TROLLEY TDS.01



Dimensions
1240 x 840 x 1935 mm



Mesh
50 x 50 mm



Container load
capacity 250 kg



Shelf load capacity
80 kg

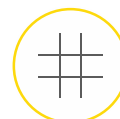


Castors 160 mm

ORDER PICKING TROLLEY TDS.02



Dimensions
1200 x 800 x 2000 mm



Mesh
50 x 50 mm



Container load
capacity 400 kg

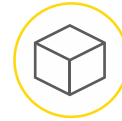


Shelf load capacity
150 kg



Castors 160 mm

TROLLEY FOR THE PLASTIC EURO CONTAINERS TDK.02



Dimensions
1300 x 650 x 1225 mm



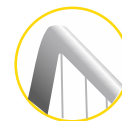
Container load
capacity 200 kg



Shelf load capacity
100 kg



Fixed shelves with
dividers

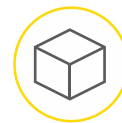


Electroplating
or powder coating



Castors 100 mm

TROLLEY FOR THE PLASTIC EURO CONTAINERS TDK.03



Dimensions
1300 x 650 x 1895 mm



Container load
capacity 400 kg



Shelf load capacity
100 kg



Fixed shelves with
dividers



Electroplating
or powder coating



Castors 100 mm

TROLLEY FOR THE PLASTIC EURO CONTAINERS TDK.07



Dimensions
1295 x 645 x 1890 mm



Container load
capacity 360 kg



Shelf load capacity
120 kg



Electroplating
or powder coating



Castors 100 mm

E-COMMERCE TROLLEY



Dimensions
1200 x 400 x 1800 mm



Container load
capacity 500 kg



Shelf load capacity
100 kg

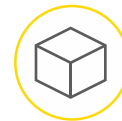


Powder coating



Castors 100 mm

PICKING TROLLEY OZO.01



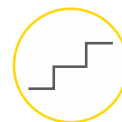
Dimensions
870 x 440 x 1160 mm



Top shelf load
40 kg



Bottom shelf load
60 kg



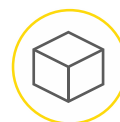
Hinged ladder
390 mm high



Castors 125 mm



TROLLEY VDK.01



Dimensions
615 x 380 x 1120 mm



Load capacity
150 kg



Powder coating



Castors 75 mm



ORDER PICKING TROLLEY TKZ.01



Dimensions
700 x 400 x 1565 mm



Load capacity
200 kg



Shelf load capacity
max 40 kg



The shelves can be hung
in 50 mm intervals



Electroplating
or powder coating



Castors 100 mm



PRODUCT PLACEMENT TROLLEY TDR.02



Dimensions
1365 x 500 x 1140 mm



Load capacity
250 kg



Shelf load capacity
max 100 kg



Hinged ladder
500 mm high



Trolley has
a PDT holder

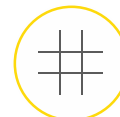


Castors 125 mm

PRODUCT PLACEMENT TROLLEY TDR NON SORT



Dimensions
2000 x 580 x 1805 mm



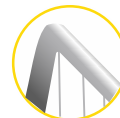
Mesh
50 x 50 mm



Container load
capacity 400 kg



Shelf load capacity
max 100 kg

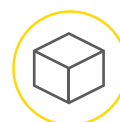


Powder coating

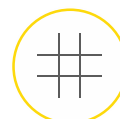


Castors 125 mm

MESH CONTAINER THZ.01



Dimensions
1000 x 800 x 1850 mm



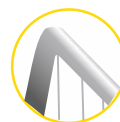
Mesh
75 x 75 mm



Container load
capacity 400 kg



Hinged ladder
605 mm high



Powder coating



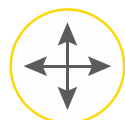
Castors 160 mm



PLATFORM TROLLEY CCW.01



Handle height
1065 mm



Usable length x width
1000 x 700 mm



Container load
capacity 600 kg

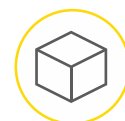


Powder coated



Castors 200 mm

PLATFORM TROLLEY BC.17



Dimensions
1100 x 650 x 1200 mm



Container load
capacity 300 kg

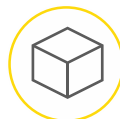
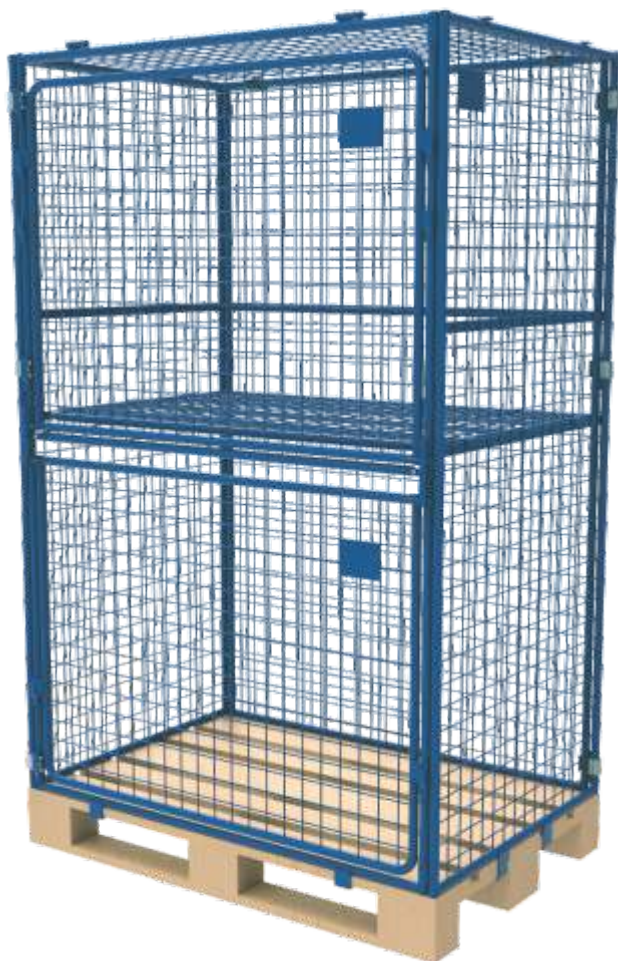


Powder coated

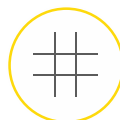


Castors 160 mm

CAGE CONTAINER WITH SHELF AND LID



Dimensions
1200 x 800 x 1800 mm



Mesh
50 x 50 mm



Shelf capacity
150 kg

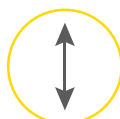


Powder coated

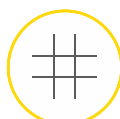
CAGE CONTAINER



Dimensions
1200 x 800 mm



Height 800/1000/1200
/1600/1800 mm



Mesh 50 x 50 mm,
100 x 100 mm



Load capacity per tier:
1 – 750 kg; 2 – 750 kg
3 – 750 kg; 4 – 500 kg

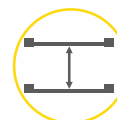


Powder coated

PACKING TABLE OZO.06



Dimensions
1400 x 900 x 900 mm



Upper shelf height
550 mm



Load on the tabletop
100 kg



Adjustable height of
table legs 50 mm



Powder coated

PACKING TABLE OZO.03

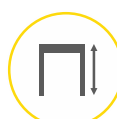
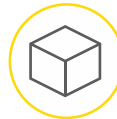


Table height
1100 mm



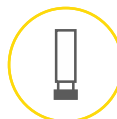
Tabletop dimensions
800x600 mm



Load on the tabletop
70 kg



Shelf load capacity
max 30 kg



Adjustable height of
table legs 50 mm



Powder coated

FRAMES FOR FLOOR STORAGE

Frames are used for storing of various loads. The frames are made in accordance with individual technical assignments depending on the load length and height (pipes, silicate cotton, tyres, etc.) At this, an opportunity for tier-wise installation is considered, number of tiers and per-tier load.

FRAMES WITH DISTANCE



FRAMES WITH DISTANCE OF TWO LEVELS

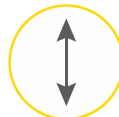


MOBILE PALLETS

Mobile pallets are used for storing and transportation of different industrial products of various purposes.



Dimensions
2400 x 1240 x 2000 mm



Height when
assembled 362 mm



Weight 100 kg

- ◆ Empty mobile pallets can be stored 20 units in the stack.
- ◆ Production on the basis of the customer's technical assignment is possible.
- ◆ The product structure is made with a flat base, two folding sides and straps for rising the loaded mobile pallet with a forklift for its further stacking in three levels.



EXPORT GEOGRAPHY

- | | | | |
|--------------|-----------|--------------|---------------|
| ◆ Austria | ◆ Finland | ◆ Kazakhstan | ◆ Netherlands |
| ◆ Azerbaijan | ◆ France | ◆ Kyrgyzstan | ◆ Poland |
| ◆ Bulgaria | ◆ Georgia | ◆ Latvia | ◆ Romania |
| ◆ Denmark | ◆ Germany | ◆ Lebanon | ◆ Spain |
| ◆ Estonia | ◆ Israel | ◆ Lithuania | ◆ UAE |

Ukraine, Kharkiv, 61106, 12, Plytkova street
tel / fax: +38 (057) 763-66-00, e-mail: info@ipris-profil.com
www.ipris-profil.com